



Roots & Branches

*a newsletter from Presbyterian
Homes of Georgia*

We need your help recommending compassionate staff

Alex Patterson

During a recent onboarding session for employees at Presbyterian Village Athens, two of our newest staff members said that they had chosen a career in senior healthcare because of personal experiences with elderly family members. One said her grandmother had suffered a series of strokes and that she was cared for in the family home. Another said her grandmother had been moved into a skilled nursing facility but the care she received was not what her family had hoped it would be. **Both of these new employees said their family experiences were their motivation for pursuing employment with us.**

This story gives me great hope. **Hiring caring, effective staff is the most important thing we do here.** All the other things on the periphery are important, but they don't matter without the right people in the right places. We have a specific mission here at Presbyterian Homes of Georgia, a mission that responds to the question that inspired our founding in 1949: "Is there a place for me?" The stories shared by these two new employees are a resounding and powerful answer to that question. Yes, there is a place for you here as part of this ministry.

There is also a place for healthcare professionals who feel called into the senior living sector. Each of you answered that question when you decided that Presbyterian Homes was the place for you to provide compassionate care that enhances the quality of life for our residents. I am glad that you are here.

And I need your help in finding others who are the kind of people and professionals that you would be proud to work beside. You know what our standards are; you know how we work together to provide that care for our residents; you know why you chose this specialty.

Our facilities, our equipment, our technology, our services, and our programs are similar to other senior living facilities in the areas where we serve. **But I believe there is a difference between simply providing healthcare and providing compassionate care.** How we provide care is what separates us from others. What makes us distinct is people making a difference for our residents. Thank you for everything you do to support our mission and our purpose at Presbyterian Homes of Georgia.

Thank you
for everything you do to support our
mission and our purpose at
Presbyterian Homes of Georgia.



Alex Patterson, CEO



Update: Campus construction and improvements

When we make decisions about construction projects, we are guided by the question asked by Anna Corrinne Hubert in 1942: "Is there a place for me?" When we opened Quitman in 1949 with three female residents, we had answered that question for the first time – and still we answer it today.

From maintaining our current facilities (with kudos to our maintenance staffs) to renovating and revitalizing vital areas of our communities to new construction projects, providing the highest quality environment for residents is critical to the compassionate care we provide. We strive to have the best staff in the best facilities possible.

There are full-scale renovations underway at **Calvin Court** and **Philips Tower**, where each resident room will be fully renovated along with the common areas and administrative offices. While a renovation of this scope will by necessity cause temporary inconveniences, we are doing all that we can to minimize them. The final result will be completely new homes for the 400 or so residents in those two towers.

At **Presbyterian Village Austell**, approximately 75% of the skilled nursing facility downstairs has been renovated. The front lobby portion 100% complete, as is the pool project. We have also moved residents into the top floor Assisted Living section of Hearthstone. In **Quitman**, we have converted personal care spaces into Assisted Living.

In **Athens**, we have begun clearing and grading the adjacent land for a new medical services building adjacent to the Village, and plans are being finalized for the new Independent Living campus just a few miles from the main campus.

All of these projects are focused on providing a place for our residents – a place where they experience the compassionate care you provide. **Thank you for all that you do every day to ensure our residents have a place to call home.**



What is the *Caring Hands Fund* and what does it do?

The first Presbyterian Home opened in Quitman in 1949 with three female residents. Their care and staffing support was funded by donations from their churches, establishing a tradition of generous and caring support that we now know as the ***Caring Hands Fund***.

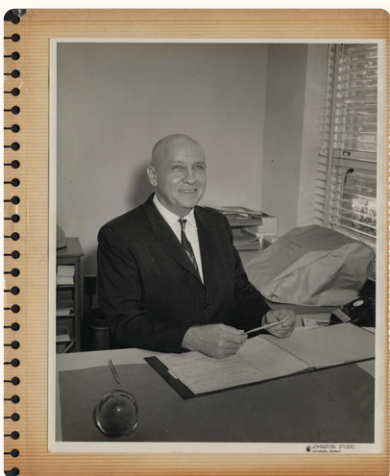
The Fund provides financial support to ensure that all residents have access to the exceptional services promised in our mission statement. We make this promise to every resident: You will have a home here for as long as you need it. No resident has ever been asked to leave because his or her financial resources have been exhausted. Your gift to the ***Caring Hands Fund*** answers "Yes" to that question: There is a place for you at Presbyterian Homes of Georgia.

Caring Hands funds help to:

- Address food insecurity
- Provide travel to medical or therapeutic appointments
- Assist with medical bills or devices
- Fund chaplaincy programs

Whenever we see a need, we seek to fill it. More than one-third of the 1,300 residents at our six communities benefit from some form of charitable care through the ***Caring Hands Fund***.

We are grateful for the generosity of thousands of people in Georgia and around the country whose contributions support the ***Caring Hands Fund***. The Presbyterian churches in Georgia have been faithful supporters for 75 years. The ***Caring Hands*** Classic golf tournament, now in its 19th year, generates significant support through sponsorships. Residents, family members, and local communities are also generous. Through the Employee Giving Program, staff members can make contributions to ensure that the residents they love and care for have a place to call home.



Rev. Dr. Frank McElroy Sr.

“
*You are the
hands of Christ,
caring for the
people of God.*
”

Our founder told the first staff members, “You are the hands of Christ, caring for the people of God.” That charge echoes through the decades to us today and is heard in the support for the ***Caring Hands Fund***.

summer FUN

fourth of july



Residents and staff celebrated the Fourth of July with a festive golf cart parade at Presbyterian Village Athens.



llama love

Residents and staff at Austell had some very special visitors this summer!



BBQ and bluegrass



Forefront Healthcare hosted a BBQ lunch for staff and dinner for residents at Presbyterian Village Austell. The Atlanta Bluegrass Allstars performed.