



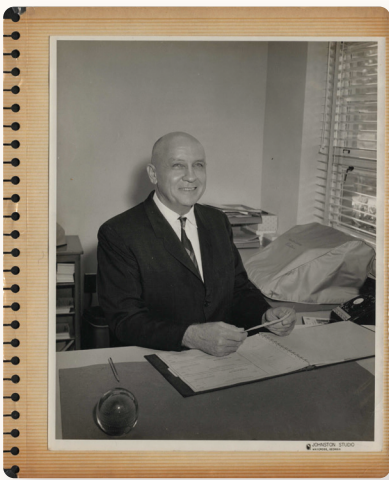
Roots & Branches

*a newsletter from Presbyterian
Homes of Georgia*

Our Founder's Charge Lives On

Alex Patterson

When the first Presbyterian Home opened in Quitman 75 years ago, my grandfather, Rev. Dr. Frank McElroy Sr., told his staff, "You are the hands of Christ, caring for the people of God." That simple yet powerful message is the foundation of how we serve our residents still today. I am grateful to each of you for how you live that message in your commitment to our mission: Presbyterian Homes of Georgia is a Christian ministry proving exceptional services to enhance the quality of life for senior adults.



Rev. Dr. Frank McElroy Sr.

“
*You are the
hands of Christ,
caring for the
people of God.*
”

Presbyterian Homes of Georgia exists because a member of my grandfather's church asked him this question one Sunday: "Does our church have a place for people like me so we won't be a burden on our families and friends?" The answer, thanks to you, is yes – there is such a place. **Since the Quitman home opened in 1949 with three female residents, we have expanded to six communities across the state with more than 1,300 residents and 700 employees.**

As I visit our communities around the state, again and again our residents praise the compassionate care you provide for them. They feel loved and cared for and prayed over. They know that you are committed to our mission and to continuing the tradition of excellence that has been established over these 75 years. I am excited to see how we carry that tradition into the next 75 years.

Alex Patterson, CEO

In our next issue:

CHALLENGES IN HEALTHCARE STAFFING



Update: Employee Training Modules

A dedicated, well-trained, and well-equipped staff is essential to providing the level of compassionate care that we pledge to our residents and their families. **We are committed to doing everything we can to be sure that you are trained, prepared, and equipped to do your job and provide exceptional services to our residents.**

We want you to know about several significant improvements we have made that are intended to support you in the important work you are doing. You will hear more from your supervisor about the ones that apply to your department.

We have upgraded our Electronic Medical Record (EMR) system through a partnership with Point Click Care. Accurate medical records are essential to the care that we pledge to provide to residents. This change required a new billing and accounting system, and we have partnered with Sage, a large software company, to provide this critical support.

We are implementing a learning management software program and launching a new talent management system. These upgrades will help us to attract and retain as many great staff members as we need to provide the quality of service that we promise.

We have entered a contract with a company called Paymerang to automate our invoicing and payment system and create some savings and efficiencies in that process.

We are grateful for your commitment to Presbyterian Homes and to our residents. Please let your supervisor or HR know if there are additional ways that we can support you in your work.

Campus Construction News

We are excited about improvements, including some expansions, at each of our six campuses. The long-awaited renovations at **Calvin Court** and **Philips Tower** have begun and promise to bring significant improvements to those communities.

In **Austell**, we have hired Plante Moran Living Forward, a senior living development consultant, to begin the master planning process. We are excited about the potential for that campus and the opportunity to create a more vibrant community there.

In **Athens**, we have closed on a piece of property Oconee County for the purpose of constructing a satellite Independent Living campus, which will help alleviate some of the demand for those accommodations at the main campus. This satellite campus will have its own dining facility with a full kitchen and wellness center and will not affect those services at the main PVA campus. There is capacity in our healthcare and skilled nursing services on the main campus and we will share those with the satellite campus. Construction will begin soon on a medical office building adjacent to the Athens campus.

Quitman and **Swainsboro** are in line for some much-needed improvements as well in aesthetics and appearance.

A Spirit of Generosity

Our founder, Rev. Dr. Frank McElroy Sr., told his staff that they were “The hands of Christ, caring for the people of God.”

You carry on that legacy today in how you provide compassionate care for our residents. They tell us that they see your love in the way you build relationships with them.



Presbyterian Homes is seen as the standard in senior living because of you. There is another way that you can show your love for our residents and help us ensure that none of them need to be concerned about their financial security.

Please make a gift to the *Caring Hands Fund* through the Employee Giving Program. Your gift, no matter the size, ensures that every resident has access to the exceptional services we promise in our mission statement.

Gifts can be made through payroll deduction before taxes, or you can make a one-time gift. Your supervisor or HR can assist you.

